

U60 - Big Creek

45.1332431, -115.3217789

⚠ This is a snapshot of U60 as of **2025-01-27**. The information here may be outdated.

[View live page](#)

[Update content pack](#)

✈ Airport Statistics

📍 Location: Big Creek, ID

🏔 Elevation: 5,743ft

📖 Sectional: Great Falls

🎂 Activation date: May 1947

⛽ Fuel: None

🛬 Runway 01/19: 3,550ft

🔓 Access: Open to the public



Tags



Featured



Public



Food



Camping



Lodging



Webcam

Description

Big Creek is one of the more popular backcountry Idaho airports. Many pilots fly-in for breakfast at the Big Creek Lodge. Dinner is also offered with reservations and overnight accomodations can be made as well. See the website for details: <https://www.bigcreeklodgeidaho.com>.

Camping is available at the campground for a nomial nightly fee too.

Last updated: 2023-03-07 00:18:47 MST

Transient Parking

Parking is available at the end of the runway on both sides.

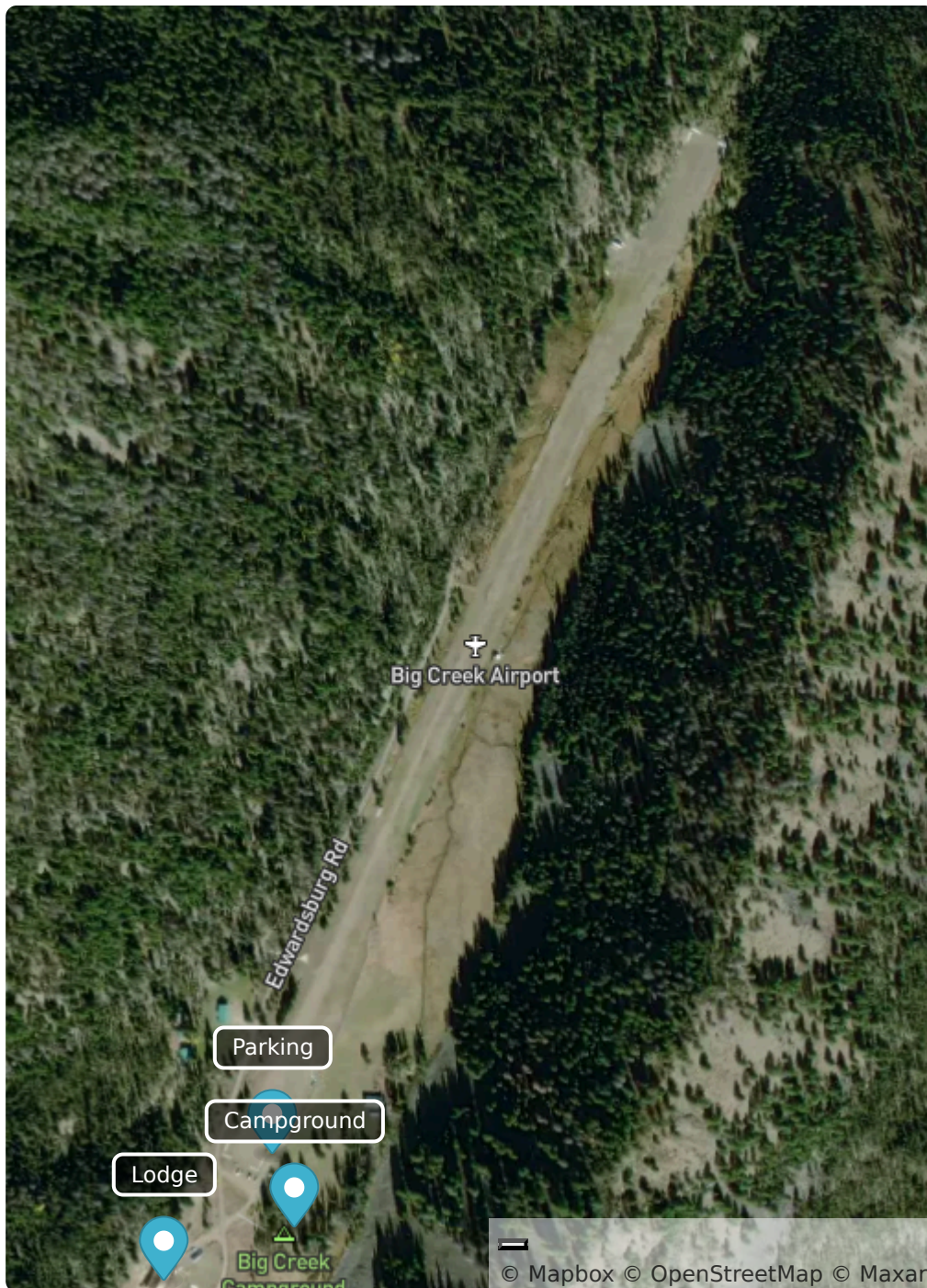
Last updated: 2023-03-07 00:19:03 MST

Airport Webcams

<https://map.eye-n-sky.net/webcam/BigCreek/BigCr...>

<https://map.eye-n-sky.net/webcam/BigCreek/BigCr...>

<https://map.eye-n-sky.net/webcam/BigCreek/BigCr...>



© Mapbox © OpenStreetMap © Maxar